

# SMD HIGH CURRENT INDUCTORS

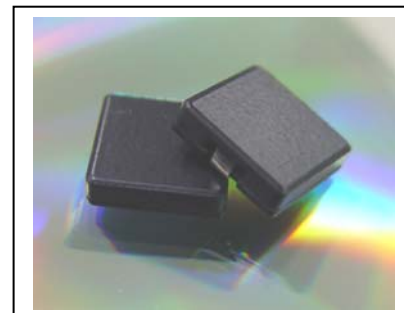
MODEL NO. : SSC-10630N2 HF SERIES

## FEATURES:

- \* LOW CORE LOSS, HIGH EFFICIENCY PERFORMANCE, HIGH MAGNETIC CHARACTERISTICS.
- \* CLOSED MAGNETIC FIELD CONSTRUCTION FOR HIGH DENSITY BOARD ASSEMBLY .
- \* RIBBON WIRE STRUCTURE.
- \* CUSTOM DESIGNS AVAILABLE.
- \* COMPLIANT WITH RoHS AND HALOGEN FREE.

## APPLICATION :

- \* NOTEBOOK COMPUTERS.
- \* VGA CARD.
- \* DC/DC CONVERTER IN POWER REGULATION SYSTEM.



## ELECTRICAL SPECIFICATION:

| PART NO            | INDUCTANCE<br>( $\mu$ H) $\pm 20\%$<br>@0ADC | INDUCTANCE<br>( $\mu$ H) TYP | TEMPERATURE<br>RISE CURRENT<br>(ADC) | INDUCTANCE<br>( $\mu$ H)Typ | SATURATION<br>CURRENT<br>(ADC)<br>(NOTE 3) | DCR<br>$\pm 10\%$<br>(m $\Omega$ ) |
|--------------------|--|------------------------------|--------------------------------------|-----------------------------|--|------------------------------------|
| SSC-10630N2-R20 HF | 0.20 $\pm 30\%$                              | 0.185                        | 26.0                                 | 0.18                        | 28.0                                       | 0.79                               |
| SSC-10630N2-R35 HF | 0.35 $\pm 30\%$                              | 0.32                         | 17.0                                 | 0.30                        | 20.0                                       | 2.20                               |
| SSC-10630N2-R56 HF | 0.56   | 0.45                         | 19.0                                 | 0.44                        | 20.0                                       | 2.20                               |
| SSC-10630N2-R68 HF | 0.68   | 0.57                         | 12.5                                 | 0.54                        | 14.5                                       | 5.10                               |
| SSC-10630N2-1R0 HF | 1.00   | 0.85                         | 12.5                                 | 0.80                        | 14.5                                       | 5.10                               |
| SSC-10630N2-1R2 HF | 1.20   | 0.90                         | 11.0                                 | 0.92                        | 10.0                                       | 6.70                               |
| SSC-10630N2-1R6 HF | 1.65   | 1.38                         | 11.0                                 | 1.32                        | 13.0                                       | 6.70                               |
| SSC-10630N2-2R2 HF | 2.20   | 2.00                         | 8.00                                 | 1.85                        | 10.5                                       | 11.5                               |

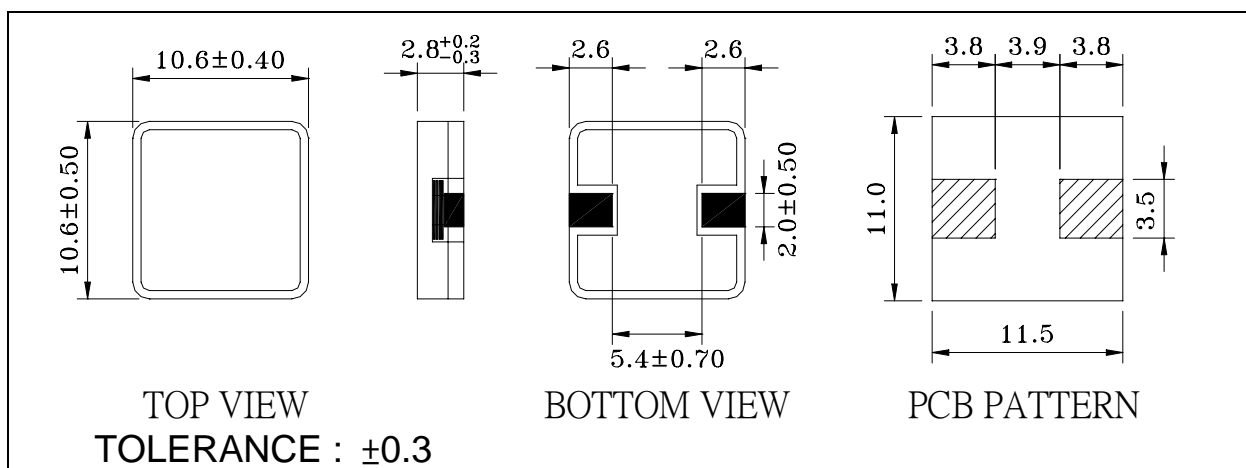
NOTE(1): Test frequency: 100 KHZ, 1Vrms.

NOTE(2):  $\Delta T=40^{\circ}\text{C}$  approximately under the temperature rise current.

NOTE(3): The saturation current indicates the value of DC current is approximately 20% lower than its initial value of inductance.

NOTE(4): Operating temperature range:  $-40^{\circ}\text{C} \sim +150^{\circ}\text{C}$

## PHYSICAL DIMENSION : (UNIT:mm)



## PACKAGING SPEC:

1. REEL SIZE & UNITS PER REEL :13",800PCS.
2. TAPE WIDTH:24mm.
3. REEL WIDTH:29.5mm.
4. COMPONENT PITCH:16mm