

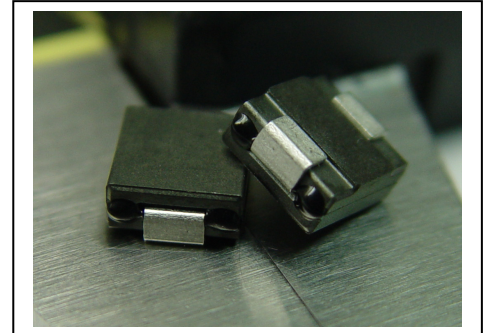
SMD HIGH CURRENT POWER BEAD INDUCTOR



MODEL NO. : SPB-07032 HF SERIES

FEATURES:

- * SUPERIOR QUALITY FOR AN AUTOMATED PRODUCTION LINE.
- * PICK AND PLACE COMPATIBLE.
- * TAPE AND REEL PACKING.
- * FREQUENCY RANGE:UP TO 2 MHZ.
- * COMPLIANT WITH RoHS AND HALOGEN FREE.



APPLICATION :

- * SERVERS.
- * MOTHERBOARD.
- * VGA CARD.

ELECTRICAL SPECIFICATION:

PART NO	INDUCTANCE @0 ADC (nH) $\pm 20\%$	DCR MAX (m Ω)	INDUCTANCE @RATED CURRENT (nH) $\pm 20\%$	RATED CURRENT (ADC)	SATURATION CURRENT (ADC) (NOTE 2)	TEMPERATURE RISE CURRENT (ADC)
SPB-07032-R10-2 HF	100	0.35	95	20	25	20

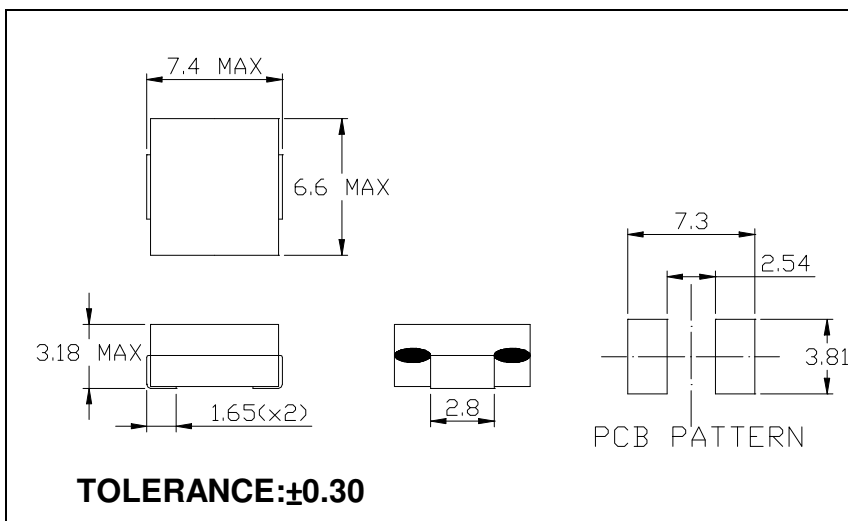
NOTE(1) : Test frequency: 100 KHZ,1Vrms.

NOTE(2) : The saturation current indicates the value of DC current is approximately 10% lower than its initial value of inductance.

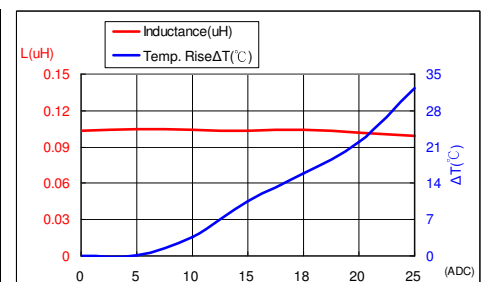
NOTE(3) : $\Delta T=30^{\circ}\text{C}$ approximately under the temperature rise current.

NOTE(4): Operating temperature range: $-40^{\circ}\text{C}\sim+150^{\circ}\text{C}$.

PHYSICAL DIMENSION : (UNIT:mm)



INDUCTANCE /TEMPERATURE RISE VS DC BIAS:



PACKAGING SPEC:

1. REEL SIZE & UNITS PER REEL :13",1500PCS.
2. TAPE WIDTH:16mm.
3. REEL WIDTH:22.4mm.
4. COMPONENT PITCH:12mm