

## BW-107 WT-DT

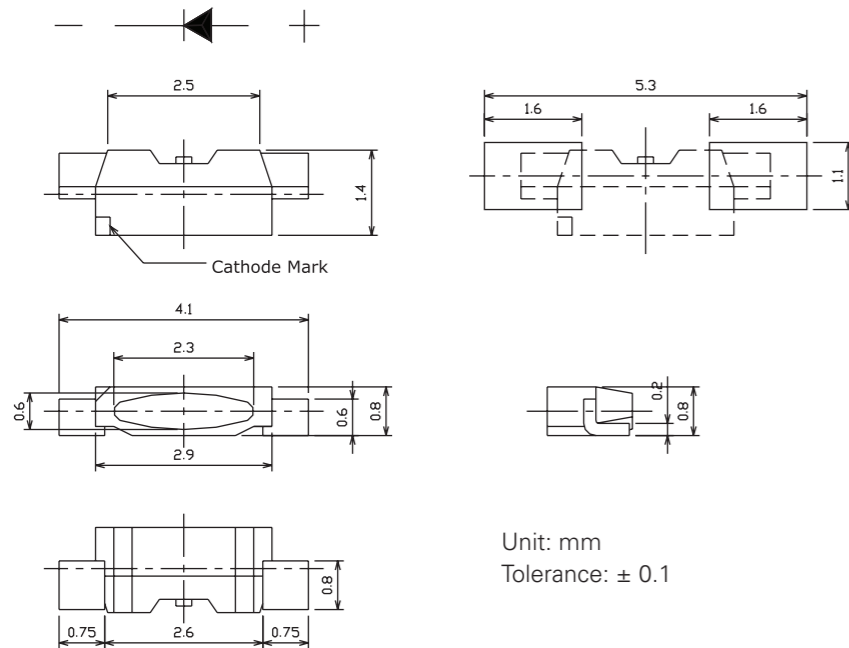
### Initial Electrical/Optical Characteristics (Ta= 25°C)

Items	Symbol	Condition	Min.	Typ.	Max.	Unit
Forward Voltage	$V_F$	$I_F=20mA$	3.0	3.3	3.8	V
Reverse Current	$I_R$	$V_R=5V$	0.0	1.0	50.0	$\mu A$
Color Coordinates	x	$I_F=20mA$	0.27	0.32	0.35	
	y	$I_F=20mA$	0.26	0.31	0.34	
Luminous Intensity	$I_V$	$I_F=20mA$	1000	1060	1300	mcd
Viewing Angle	deg	$I_F=20mA$		105		deg

\*The CIE value tolerance is  $\pm 0.005$  unit.

\*\* The luminous intensity tolerance is  $\pm 28$  mcd.

### Dimension & Recommended Solder Pattern



### Absolute Maximum Rating (Td=25°C)

Series	$I_F$ (mA)	$I_{FP}$ (mA)	$V_R$ (V)	$T_{OP}$ (°C)	$T_{ST}$ (°C)
BW-107 WT-DT	30	100	5	-30~+85	-40~+100

7 inch Anti-Static Reel  
3000 pcs / reel

## BW-108 WT-DT

### Initial Electrical/Optical Characteristics (Ta= 25°C)

Item	Symbol	Condition	Min.	Typ.	Max.	Unit
Forward Voltage	$V_F$	$I_F=20mA$	3.0	3.5	3.6	V
Reverse Current	$I_V$	$V_R=5V$	0.0	1.0	50.0	$\mu A$
Color Coordinates	x	$I_F=20mA$	0.264	0.290	0.330	
	y	$I_F=20mA$	0.248	0.285	0.339	
Luminous Intensity	$I_V$	$I_F=20mA$	1000	1160	1440	mcd
Viewing Angle	deg	$I_F=20mA$		105		deg

\*The Forward Voltage tolerance is  $\pm 0.03V$ .

\*The Forward Voltage at 15mA is about 0.1V less than 20mA.

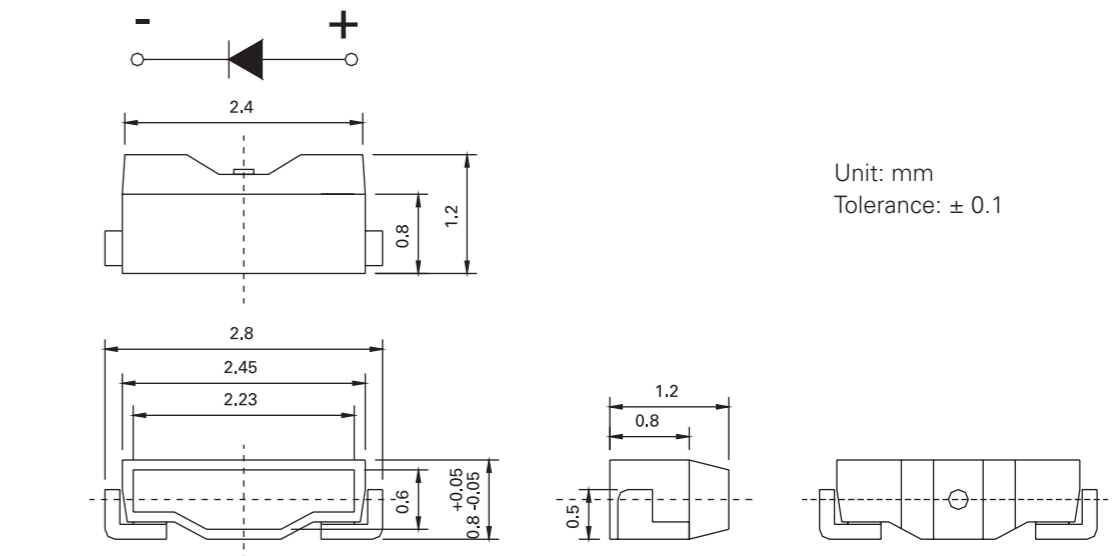
\*\*The CIE value tolerance is  $\pm 0.005$  unit.

\*\*\*The luminous intensity tolerance is  $\pm 6\%$ .

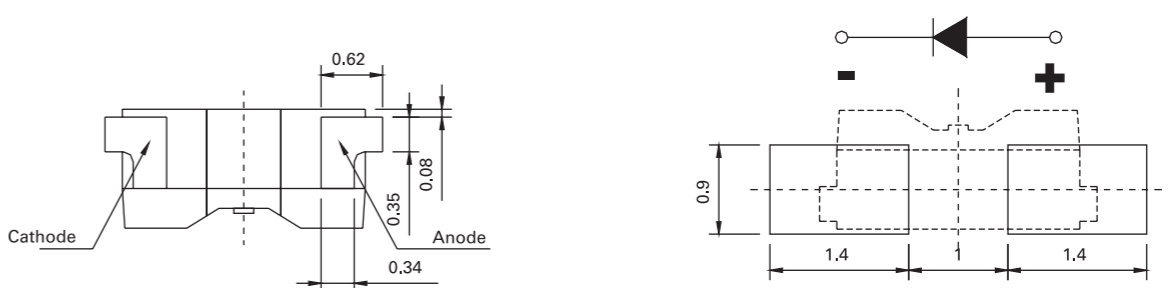
\*\*\*The luminous intensity at 15mA is about 20% less than 20mA.

### Outline Dimension & Recommended Solder Pattern

#### Pin Connection



#### Recommended Pad



### Absolute Maximum Rating (Td= 25°C)

Series	$I_F$ (mA)	$I_{FP}$ (mA)	$V_R$ (V)	$T_{OP}$ (°C)	$T_{ST}$ (°C)
BW-108 WT-DT	30	100	5	-30~+85	-40~+100

7 inch Anti-Static Reel  
3000 pcs / reel

## BW-109 WT-DT

### Initial Electrical/Optical Characteristics (Ta= 25°C)

Items	Symbol	Condition	Min.	Typ.	Max.	Unit
Forward Voltage	$V_F$	$I_F=20mA$	3.0	3.5	3.5	V
Reverse Current	$I_R$	$V_R=5V$	0.0	1.0	50.0	$\mu A$
Color Coordinates	x	$I_F=20mA$	0.287	0.292	0.311	
	y	$I_F=20mA$	0.276	0.308	0.315	
Luminous Intensity	$I_V$	$I_F=20mA$	1000	1290	1780	mcd
Viewing Angle	deg	$I_F=20mA$		113		deg

\*The Forward Voltage tolerance is  $\pm 0.03V$ .

\*The Forward Voltage at 15mA is about 0.1V less than 20mA.

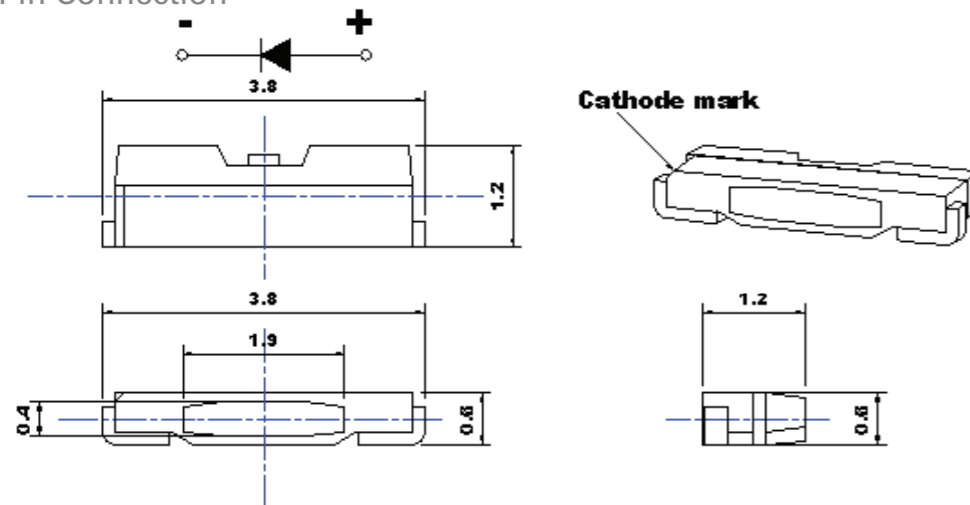
\*\*The CIE value tolerance is  $\pm 0.005$  unit.

\*\*\*The luminous intensity tolerance is  $\pm 6\%$ .

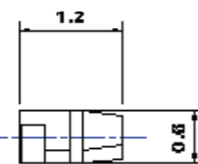
\*\*\*The luminous intensity at 15mA is about 20% less than 20mA.

### Dimension & Recommended Solder Pattern

#### Pin Connection

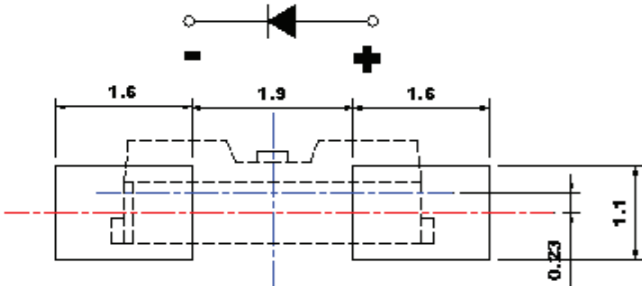


Cathode mark



Unit: mm  
Tolerance:  $\pm 0.075$

#### Recommended Pad



### Absolute Maximum Rating (Td=25°C)

Series	$I_F(mA)$	$I_{FP}(mA)$	$V_R(V)$	$T_{OP}(^{\circ}C)$	$T_{ST}(^{\circ}C)$
BW-109 WT-DT	30	100	5	-30~+85	-40~+100

7 inch Anti-Static Reel  
3000 pcs / reel