

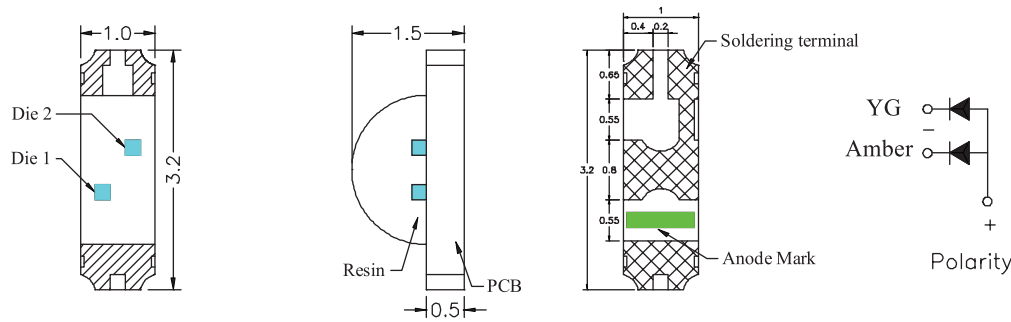


## BW-210 Series

### Electro-Optical Characteristics

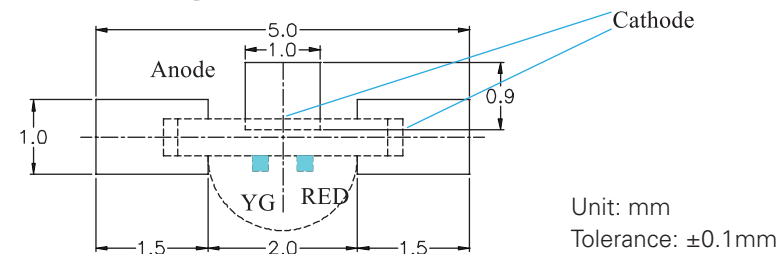
Code for Parts BW-XXXXX	Lighting Color	Material	V <sub>F</sub> (V)		λ(nm)			I <sub>V</sub> (mcd)	Internal Circuit
			Typ.	Max.	λ <sub>D</sub>	λ <sub>P</sub>	Δλ	Typ.	
BW-210URO/YG	Red	AlGaInP	2.00	2.30	633	640	19		
	Green	AlGaInP	2.00	2.30	572	570	18		
BW-210UD/YG	Amber	AlGaInP	2.00	2.30	605	610	17		
	Green	AlGaInP	2.00	2.30	572	570	17		
BW-210UY/YG	Yellow	AlGaInP	2.00	2.30	591	592	32		
	Green	AlGaInP	2.00	2.30	572	570	17		
BW-210GR/BL	Green	InGaN	3.30	3.60	527	525	37		
	Blue	InGaN	3.23	3.60	470	468	25		

### Package Dimension of Device (BW210 Common Anode Series)



1. Soldering terminal may shift in x, y direction.

### Recommended Soldering Pad Dimensions



### Absolute Maximum Rating

Series	I <sub>F</sub> (mA)	I <sub>FP</sub> (mA)	V <sub>R</sub> (V)	T <sub>OP</sub> (°C)	T <sub>ST</sub> (°C)
BW-210 Series	30	100	5	-30~+80	-40~+85

\*Condition for I<sub>FP</sub> is pulse of 1/10 duty and 0.1 msec width

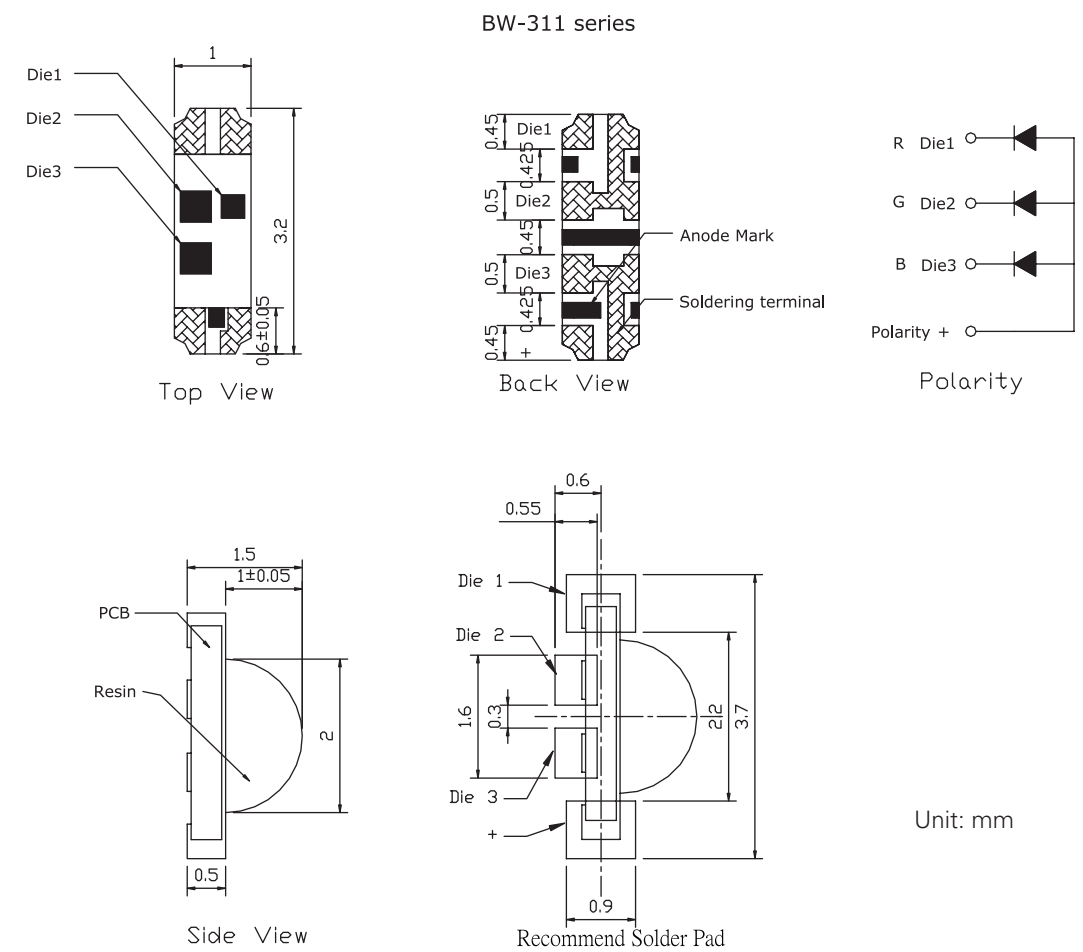
7 inch Anti-Static Reel  
3000 pcs / reel

## BW-311 RGB-CT

### Electro-Optical Characteristics (@20mA)

Code for Parts BW-XXXXX	Lighting Color	Material	V <sub>F</sub> (V)		λ(nm)			I <sub>V</sub> (mcd)	Internal Circuit
			Typ.	Max.	λ <sub>D</sub>	λ <sub>P</sub>	Δλ	Typ.	
BW-311RCGB	Red	AlGaInP	1.90	2.20	624	630	18		
	Green	InGaN	3.20	3.60	527	525	37		
	Blue	GaN	3.30	3.60	472	470	25		

### Dimension and Recommend Solder Pattern



### Absolute Maximum Rating

Series	I <sub>F</sub> (mA)	I <sub>FP</sub> (mA)	V <sub>R</sub> (V)	T <sub>OP</sub> (°C)	T <sub>ST</sub> (°C)
BW-311 Series	30	100	5	-40~+80	-40~+85

\*Condition for I<sub>FP</sub> is pulse of 1/10 duty and 0.1 msec width

7 inch Anti-Static Reel  
3000 pcs / reel