

SMD

HIGH CURRENT INDUCTORS



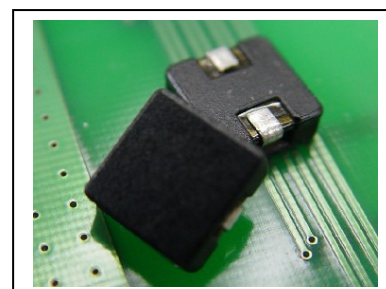
MODEL NO. : SSC-1040SD HF SERIES

FEATURES:

- * LOW PROFILE, HIGH POWER, LOW LOSS, LOW DCR WITH LARGE CURRENT DESIGN.
- * CLOSED MAGNETIC CIRCUIT CONSTRUCTION FOR BOTH SMALL MAGNETIC LEAKAGE FLUX AND HIGH DENSITY BOARD ASSEMBLY .
- * CUSTOM DESIGNS AVAILABLE.
- * COMPACT SIZE WITH HIGH PERFORMANCE CORE AND FLAT WIRE STRUCTURE.
- * SOLUTION FOR STRONGER STRUCTURE AND MORE EFFICIENT NOISE SUPPRESSION.
- * COMPLIANT WITH RoHS AND HALOGEN FREE.

APPLICATION :

- * DC/DC CONVERTER IN POWER REGULATION SYSTEM.
- * CPU INDUCTORS IN NOTEBOOK COMPUTERS.
- * INDUCTOR FOR GENERAL PURPOSE AVAILABLE.



ELECTRICAL SPECIFICATION:

PART NO	INDUCTANCE (uH) $\pm 20\%$ @0 ADC	DCR $\pm 10\%$ (m Ω)	INDUCTANCE (uH) TYP	TEMPERATURE RISE CURRENT (ADC)	SATURATION CURRENT (ADC) (NOTE 3)
SSC-1040SD-R15 HF	0.15 $\pm 30\%$	0.58	0.13	25	36
SSC-1040SD-R34 HF	0.34	1.10	0.27	24	35
SSC-1040SD-R62 HF	0.62	1.71	0.47	21	19
SSC-1040SD-1R0 HF	1.00	3.30	0.73	14	17
SSC-1040SD-1R5 HF	1.50	5.20	1.10	13	12
SSC-1040SD-2R0 HF	2.00	7.30	1.55	10.5	11
SSC-1040SD-2R8 HF	2.80	10.6	2.10	9.0	10.5
SSC-1040SD-4R3 HF	4.30	14.1	3.20	7.5	9.5
SSC-1040SD-5R6 HF	5.60	21.1	4.10	6.0	8.3

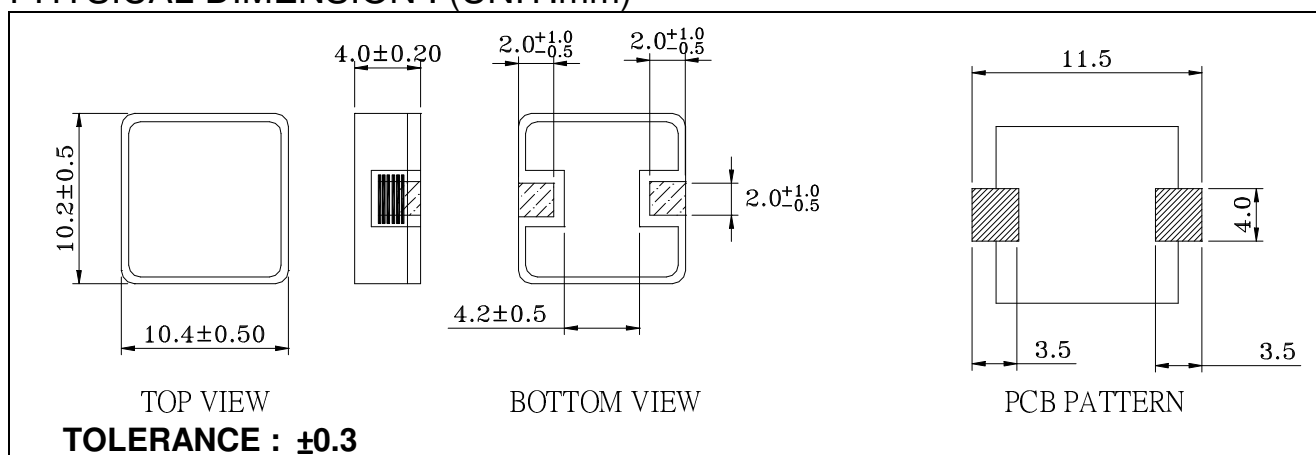
NOTE(1): Measuring condition: 100 KHZ, 0.1Vrms

NOTE(2): $\Delta T = 40^\circ\text{C}$ approximately under the temperature rise current.

NOTE(3): The saturation current indicates the value of DC current is approximately 30% lower than its initial value of inductance.

NOTE(4): Operating temperature range: $-40^\circ\text{C} \sim +150^\circ\text{C}$

PHYSICAL DIMENSION : (UNIT:mm)



PACKAGING SPEC:

1. REEL SIZE & UNITS PER REEL :13",800PCS.
2. TAPE WIDTH:24mm.
3. REEL WIDTH:29.5mm.
4. COMPONENT PITCH:16mm